

TUNG-SOL

CATHODE RAY

THE 16SP4 AND 16SP4A ARE DIRECT-VIEW PICTURE TUBES DESIGNED FOR USE IN TELEVISION APPLICATIONS. THEY ARE IDENTICAL *EXCEPT* FOR THE GREY FILTER FACEPLATE USED ON THE 16SP4A. THEIR COMMON FEATURES INCLUDE:

UNIPOTENTIAL CATHODE	EXTERNAL CONDUCTIVE COATING
ROUND GLASS CONSTRUCTION	MAGNETIC FOCUS & DEFLECTION
EXTERNAL SINGLE FIELD ION TRAP	10 1/4" X 14 1/2" RASTER SIZE

ELECTRICAL DATA

FOCUSING METHOD		MAGNETIC
DEFLECTING METHOD		MAGNETIC
DEFLECTION ANGLE (APPROX.)	70	DEGREES
DIRECT INTERELECTRODE CAPACITANCES (APPROX.):		
MAXIMUM EXTERNAL CONDUCTIVE COATING TO ANODE	3 500	$\mu\mu\text{f}$
MINIMUM EXTERNAL CONDUCTIVE COATING TO ANODE	1 500	$\mu\mu\text{f}$

OPTICAL DATA

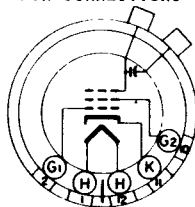
PHOSPHOR NUMBER	NO. 4
FLUORESCENT COLOR	WHITE
PHOSPHORESCENT COLOR	WHITE
PERSISTENCE	MEDIUM

MECHANICAL DATA

OVERALL LENGTH	17 5/16 \pm 3/8	INCHES
GREATEST DIAMETER OF BULB	15 7/8 \pm 1/8	INCHES
MINIMUM USEFUL SCREEN DIAMETER	14 1/2	INCHES
BULB CONTACT	RECESSED SMALL CAVITY CAP	J1-21
BASE	SMALL SHELL DUODECAL 5 PIN	B5-57
BASING		12N
BULB CONTACT ALIGNMENT		
J1-21 CONTACT ALIGNS WITH PIN POSITION #3 \pm 10 DEGREES		

PIN CONNECTIONS

PIN 1 - HEATER
 PIN 2 - GRID NO. 1
 PIN 10 - GRID NO. 2



PIN 11 - CATHODE
 PIN 12 - HEATER
 ANODE CAP

BOTTOM VIEW

CONTINUED ON FOLLOWING PAGE

TUNG-SOL

CONTINUED FROM PRECEDING PAGE

RATINGS
DESIGN CENTER VALUES

HEATER VOLTAGE	6.3	VOLTS
HEATER CURRENT	0.6	AMP.
MAXIMUM DC ANODE VOLTAGE	14 000	VOLTS
MAXIMUM DC GRID #2 VOLTAGE	410	VOLTS
MAXIMUM GRID #1 VOLTAGE:		
DC NEGATIVE-BIAS VALUE	125	VOLTS
DC POSITIVE-BIAS VALUE	0	VOLTS
POSITIVE-PEAK VALUE	2	VOLTS
MAXIMUM DC PEAK HEATER-CATHODE VOLTAGE:		
HEATER NEGATIVE WITH RESPECT TO CATHODE		
DURING WARM-UP PERIOD NOT TO EXCEED 15 SECONDS	410	VOLTS
AFTER EQUIPMENT WARM-UP PERIOD	125	VOLTS
HEATER POSITIVE WITH RESPECT TO CATHODE	125	VOLTS

TYPICAL OPERATING CONDITIONS AND CHARACTERISTICS

DC ANODE VOLTAGE	12 000	VOLTS
DC GRID #2 VOLTAGE	300	VOLTS
DC GRID #1 VOLTAGE ^A	-33 to -77	VOLTS
DC FOCUSING COIL CURRENT (APPROX.) ^B	110	MA.
DC ION TRAP CURRENT (APPROX.)	120	MA.

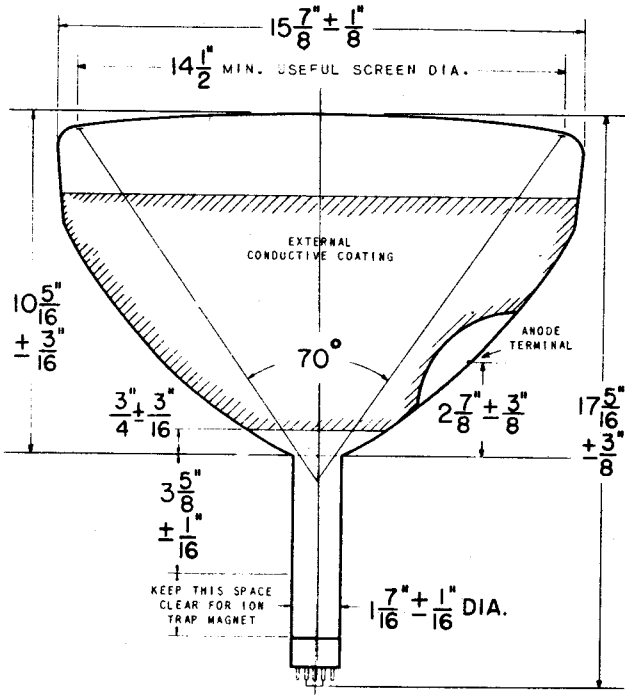
^A VISUAL EXTINCTION OF UNDEFLECTED FOCUSED SPOT.

^B FOR STANDARD FOCUS WITH THE COMBINED GRID #1 BIAS VOLTAGE AND VIDEO SIGNAL VOLTAGE ADJUSTED TO PRODUCE A HIGHLIGHT BRIGHTNESS OF 20 FOOT LAMBERTS ON A 10 1/4" X 14 1/2" PICTURE SIZE. DISTANCE FROM REFERENCE LINE TO CENTER OF AIR GAP ON FOCUS COIL SHALL BE 3.25 INCHES.

CIRCUIT VALUES

MAXIMUM GRID #1 CIRCUIT RESISTANCE	1.5	MEG OHMS
------------------------------------	-----	----------

TUNG-SOL



PRINTED IN U. S. A.