

# STABILISING TUBE

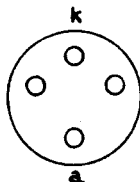
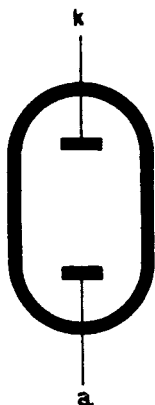
Heavy-duty neon-filled voltage stabiliser.

# 13201A

## OPERATING CONDITIONS

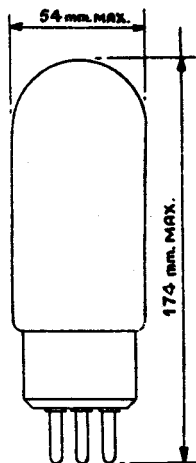
V ignition max.	135	V
V burning	90-110	V
I quiescent	100	mA
I max	200	mA
I min	15	mA
A.C. resistance	80	$\Omega$

## ARRANGEMENT OF ELECTRODES AND BASE CONNECTIONS



BRITISH 4-PIN BASE

## DIMENSIONS



# 13201A

## STABILISING TUBE

Heavy-duty neon-filled voltage stabiliser.

