

Sylvania

T E N T A T I V E

TYPE 1B52

Anti-TR Gas Switching Tube, Fixed Tuned

Ratings and Characteristics

Center Frequency	3625	Mc
Operating Frequency Range	3540-3710	Mc
Minimum Transmitter Peak Power	20	kw
Minimum Voltage Standing Wave Ratio at Center Frequency	21	
Tuning Susceptance (B/YO)	±0.05	
Maximum Equivalent Conductance (G/YO)	0.05	
Maximum Loaded Q (QL)	5.5	
Ambient Temperature Range	-50 to +100°	C

PHYSICAL SPECIFICATIONS

Envelope: Metal

Dimensions: As Per Outline

Ionizable Medium: Argon

No. of Electrodes: Two

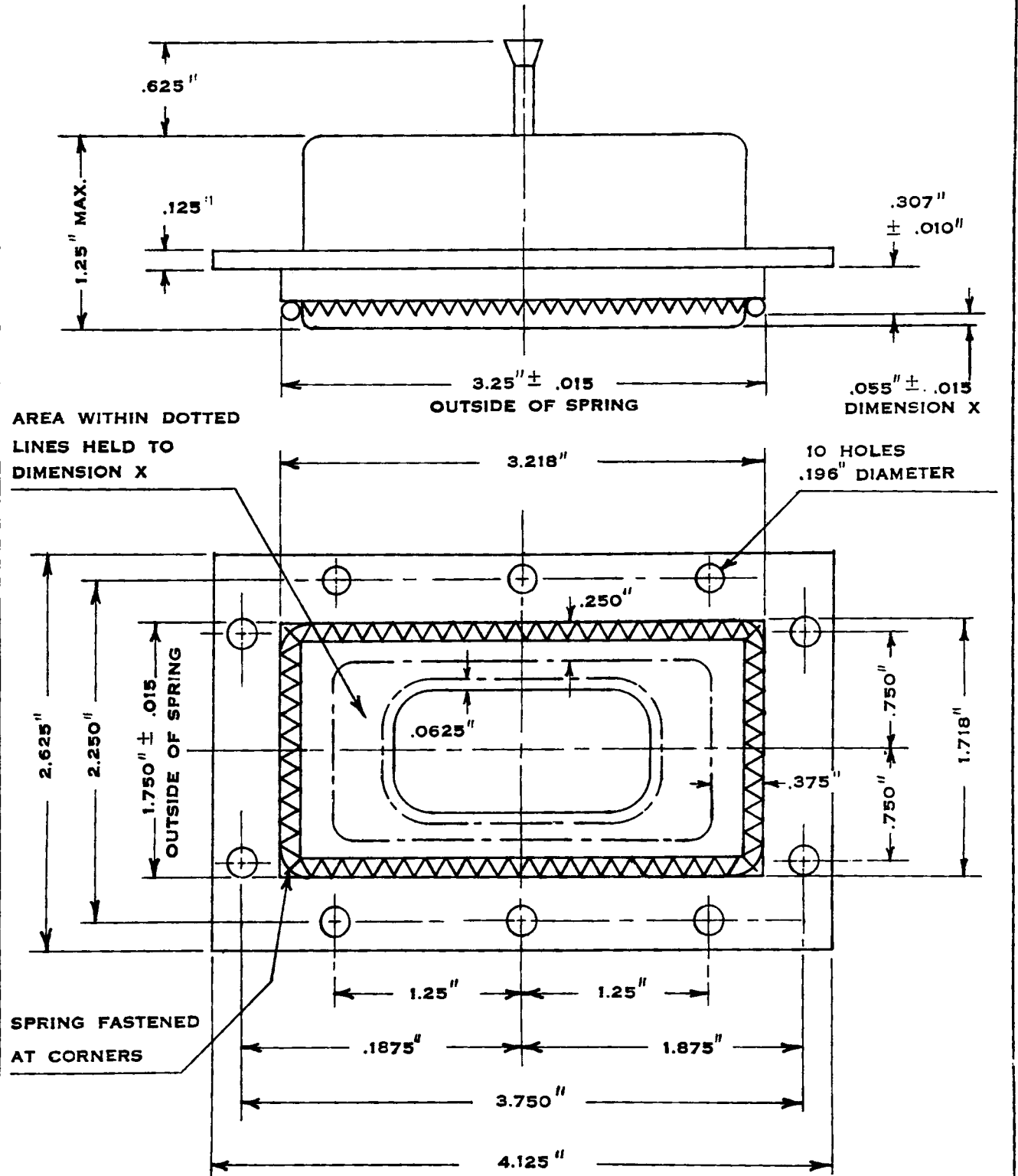
Mounting Position: Any

from RMA release # 501, June 15, 1946

SYLVANIA ELECTRIC PRODUCTS INC.

OUTLINE DRAWING

TYPE 1B52



May 27, 1946