

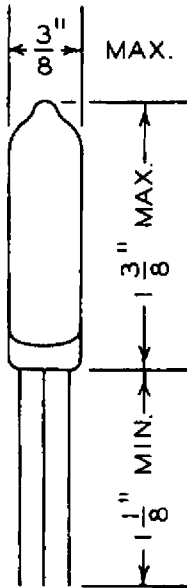


THE VICTOREEN INSTRUMENT CO.

5806 HOUGH AVE., CLEVELAND, OHIO

SEPTEMBER 1949 DATA SHEET 16 TENTATIVE

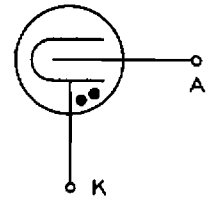
1888 THYRODE



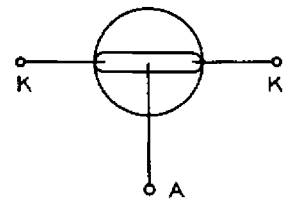
The 1888 is a self-quenched, subminiature glass thyrode designed for operation at 300 volts. It is sensitive to gamma-ray radiation, and is recommended for qualitative use only.

The 1888 is especially suited for applications requiring small physical size or low counting rates. Because of its low operating voltage, compact construction of instruments is economically accomplished.

Typical applications are found in audio detectors and visual indicators.



SYMBOL



BASE VIEW

CHARACTERISTICS

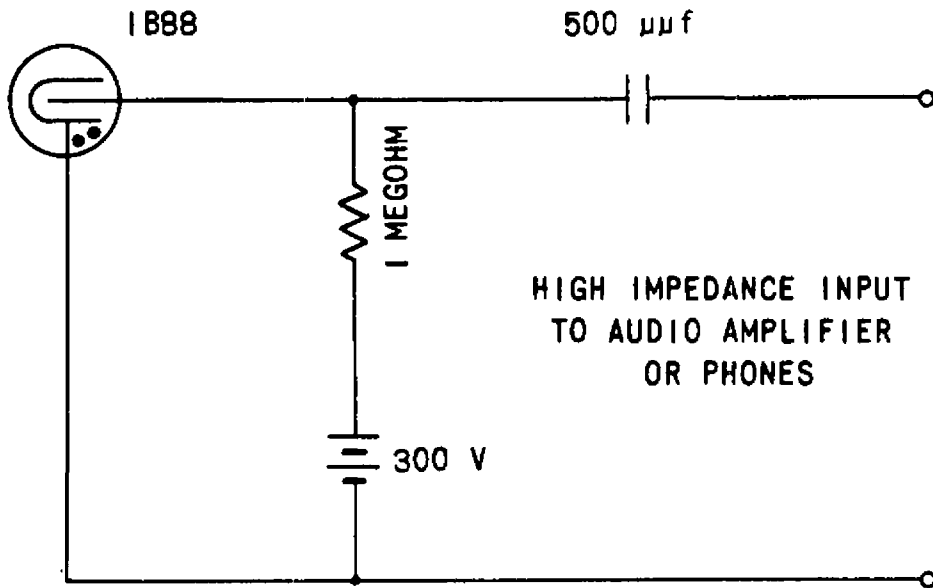
Threshold voltage*275	volts
Plateau length*(min) 50	volts
Plateau slope*(Vo = 275-325)..... 30%/50	volts
Recovery time..... 100	μsec
Background.....(Vo=300 volts).....12	c/m
Life....(at 2000 c/m: Vo = 300v).....5x10 ⁷	counts
Life test end point, slope..... 30%/30	volts
Electrode Capacitance..... 1	μμf
Active length..... 1/2	inch
Wall thickness..... 200	mg/cm ²

* New tubes

RATINGS

Operating voltage..... 300	volts
Ambient temperature.....(min) -40° C	
(max) 100° C	
Humidity..... 100%	

TYPICAL CIRCUIT



TUBE CHARACTERISTICS

